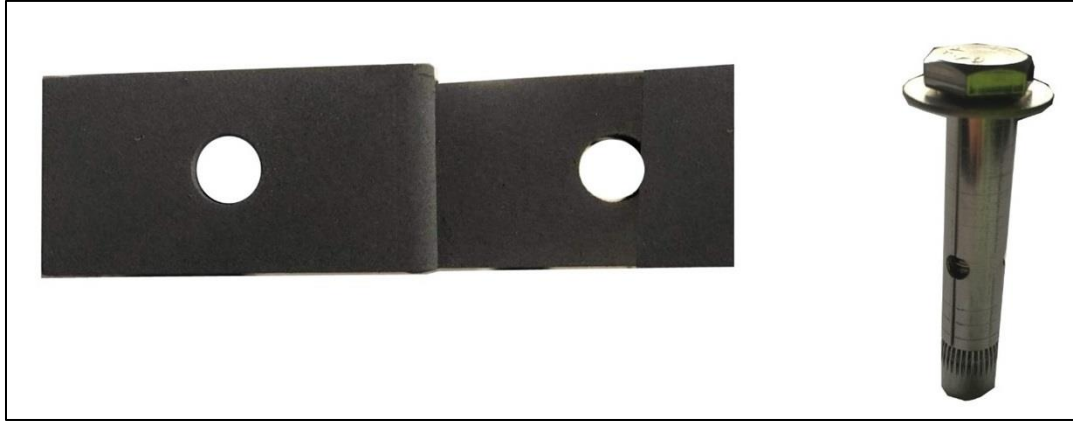


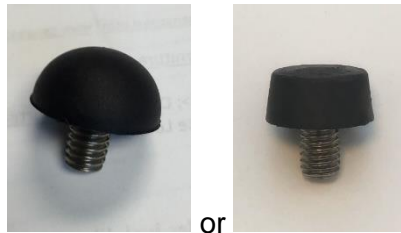
# CABANA COAST

## Bolt-Down Security Fasteners: Model# 8627-2



1 set includes 4 aluminum fixtures & 4 carriage bolts/anchor bolts with sleeve anchors

Compatible with screw-in black glass-embedded nylon glide type only (used on most aluminum products) as pictured below (round & flat head are used interchangeably)



Using a concrete drill bit that is sized to the carriage bolt, drill a hole in the existing concrete foundation in the desired location to fit the carriage bolt length minus the head. Clean out any dust or debris that is left behind in the hole.

Remove the threaded foot glide from the leg of the table or chair that you wish to secure. Place the leg over one end of the aluminum fixture with the leg and fixture holes aligned. Place the foot glide through the fixture's hole and tighten securely by hand back into the leg. One end of the security fastener is now in place.

Place the other end of the aluminum fixture over the hole in the concrete foundation with the holes aligned, then place the carriage bolt through the fixture's hole into the concrete. Tap the top of the bolt with a hammer to confirm that it is completely in the hole.

Using a wrench, turn the bolt head in a clockwise direction. This will engage the sleeve anchor, which will expand to fit securely within the hole. The security fastener is now installed.